



Size 2-4



1100mm
(max door width)

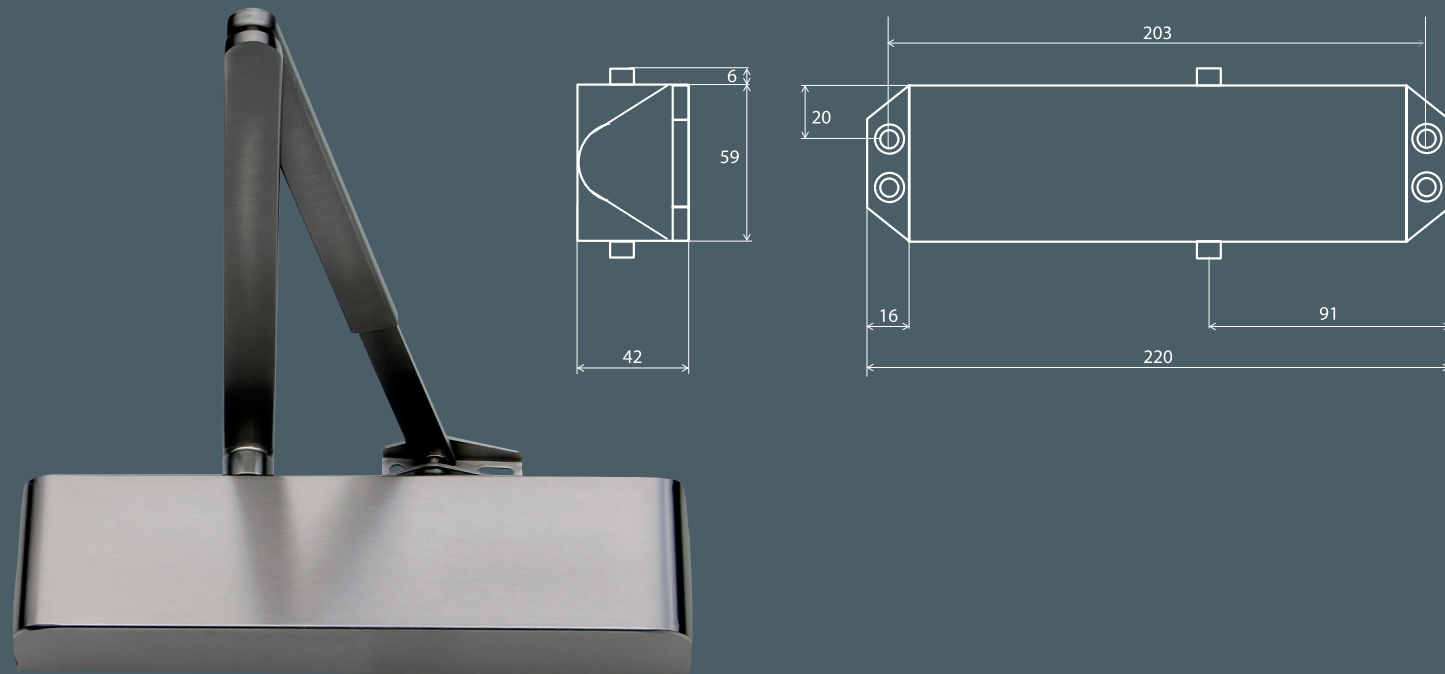


80kg
(max door weight)



25 Years

TS4.224 - Size 2-4 Template Adjustable Architectural Door Closer



Product Overview:

A stylish adjustable power overhead door closer, which is suitable for many applications where there is general usage, such as office accommodation, flat entrance doors etc. Suitable for doors up to 1100mm/80kg in Fig 1 and 950mm/60kg Fig66 application.

Testing & Standards

- CE marked against EN1154
- UKCA marked UKCA1154
- Suitable for use on timber fire doors of up to 120 minutes fire resistance
- Certifire approved - refer to CF689 for scope of approval
- Safe in use
- High corrosion resistance

Specification	TS4.224	
Closing force (Fig 1)	EN size	2-4
Door size (max)	Width (mm)	1100
	Weight (kg)	80
Door size (min)	Width (mm)	250
	Length (mm)	220
Body dimensions	Height (mm)	59
	Depth (mm)	42
	Application	Pull side fig 1
Application	Push side fig 66	✓
	Transom fig 61	✓*
	Mechanism	Rack & pinion
Angle of opening	S3=180° / S4=105°	
Non handed	✓	
Power adjustment by position	✓	
Adjustable sweep speed	✓	
Adjustable latch speed	✓	

Options	TS4.224
Hold-open arm (not suitable for use on fire doors)	✓*

* these options are not covered by CE

Cover options	TS4.224
Semi-radius	✓

Finish options	TS4.224
Cover & matching sissor arm	SIL ✓
	SSS ✓
	PB ✓
	PSS ✓
	RAL/Lacquered ✓
	Special plated finishes ✓

Tested to EN1154 - fig. 1	TS4.224
---------------------------	---------

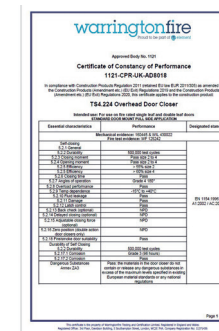
4 8 $\frac{3}{4}$ 1 1 3 - fig.1

3 8 3 1 1 3 - fig.66

CE certificate



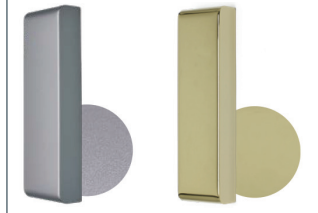
UKCA certificate



Certifire certificate



Finishes



Silver
Choice of 3 brass finishes



SSS
Choice of RAL finishes



PSS
Choice of 6 bronze finishes

Cover options



Semi radiused cover
L:258 x H:65 x D:44mm